



Leading the Transport People Want

The Korea Transport Institute





Contents

- 01** *Function and Role*
- 02** *Vision and Mission*
- 03** *History*
- 04** *Organization*
- 05** *State of Institute*
- 06** *Research Areas*
- 07** *International Cooperation & Knowledge Sharing*
- 08** *Quantum Leap in Sejong Era*



A Comprehensive Research Institute on Transport and Logistics

- Developing national policies and social agendas in the transport sector
- Providing policy-making assistance to the government

National Think-Tank

- Developing future transport technologies to explore new growth engines for the national economy
- Devising a new strategy to support national transport policies

Hub for Global Transport Cooperation

- Pursuing the Knowledge Sharing Program (KSP) in the transport sector
- Developing global agendas and promoting cooperation with international organizations

Vision

A core research institute that plays a crucial role in establishing national transport and logistics policies based on knowledge management and a research system oriented toward fusion and synergy

Core Values

Policy Leader

Reading National Transport Policies

Leading efforts to formulate transport and logistics policies that can help promote advanced lifestyles and enhance future national values

+

Knowledge Leader

Knowledge Management System

Building a knowledge management system that can maximize knowledge creation capabilities and the knowledge sharing environment

+

Convergence Leader

Fusion-oriented and Creative Research Environment

Realizing a fusion-oriented synergistic research environment based on collaboration and creativity

Goals

1986 – 2000 Make History of Korean Transport System

*Master Plan for Seoul-Busan
High Speed Railway*

*Master Plan for Urban
Transport System Improvements*

*Master Plan for Construction of
National Railway Network*

Master Plan for Logistics Policy

Building the National Transport DB

*Established Plan for
Key National Traffic Network*

*Urban Traffic Improvement
Promotion Law Revision*

- Nov. 1985** Transport Development Research Institute officially chartered
- Feb. 1986** KOTI launched as an incorporated foundation
- Aug. 1987** Inaugurated as a government-funded institution
- Feb. 1992** KOTI moved to a new location (Gangnam District, Seoul)
- Jun. 1996** Tourism Research Center moved to the Ministry of Culture and Sports
- Sept. 1998** Korea Transport Database Center established
- Jan. 1999** Joined the Korean Council of Economics & Social Research Institutes
- Mar. 1999** Moved to the Construction & Transport Research Complex (Goyang City, Gyeonggi Province)



2001 – 2010

Consider Convenience Transport System for People

*Reform the Public Transport System
Master Plan for Urban
Improvement of Pedestrian Culture*

*Enactment of Movability
Improvement for Traffic-Vulnerables Law*

Expanded an Intelligent Transport Systems

Enforce an Expressway Transfer System

*Research on Transport Environment
and Sustainable Transport*

Enforce a Bike Rapid Transit System

- Jan. 2005** Center for Road Freight Transport Market established
- July. 2005** Joined the Korean Council of Economics, Humanities, Social Research Institutes
- Aug. 2006** Celebrated 20th anniversary
- Jan. 2006** Opening of the Center for Logistics Policy and Certification
- Sept. 2006** North Korea Transportation Information Center established
- Apr. 2009** Selected as the Most Outstanding Research Institute (by Prime Minister's office)
- Dec. 2009** Inauguration of the Global Research Office for Green Growth and Convergence
- Jan. 2010** MOU signed with World Bank
- Mar. 2010** MOU signed with Asian Development Bank
- Apr. 2010** Selected as the Most Outstanding Research Institute (by Prime Minister's office)



2011 – 2015 Advanced to the World Beyond the Northeast Asia

*Cooperative Study and Manpower Exchange
with International Organizations*

*Educational Training for Public Officials
of Transport (Korea-ASEAN)*

Educational Training for World Bank LUTP

*Educational Training for Citynet
Public Officials of Transport*

KSP Report Publications

130 MOUs Signed with Overseas Institutions

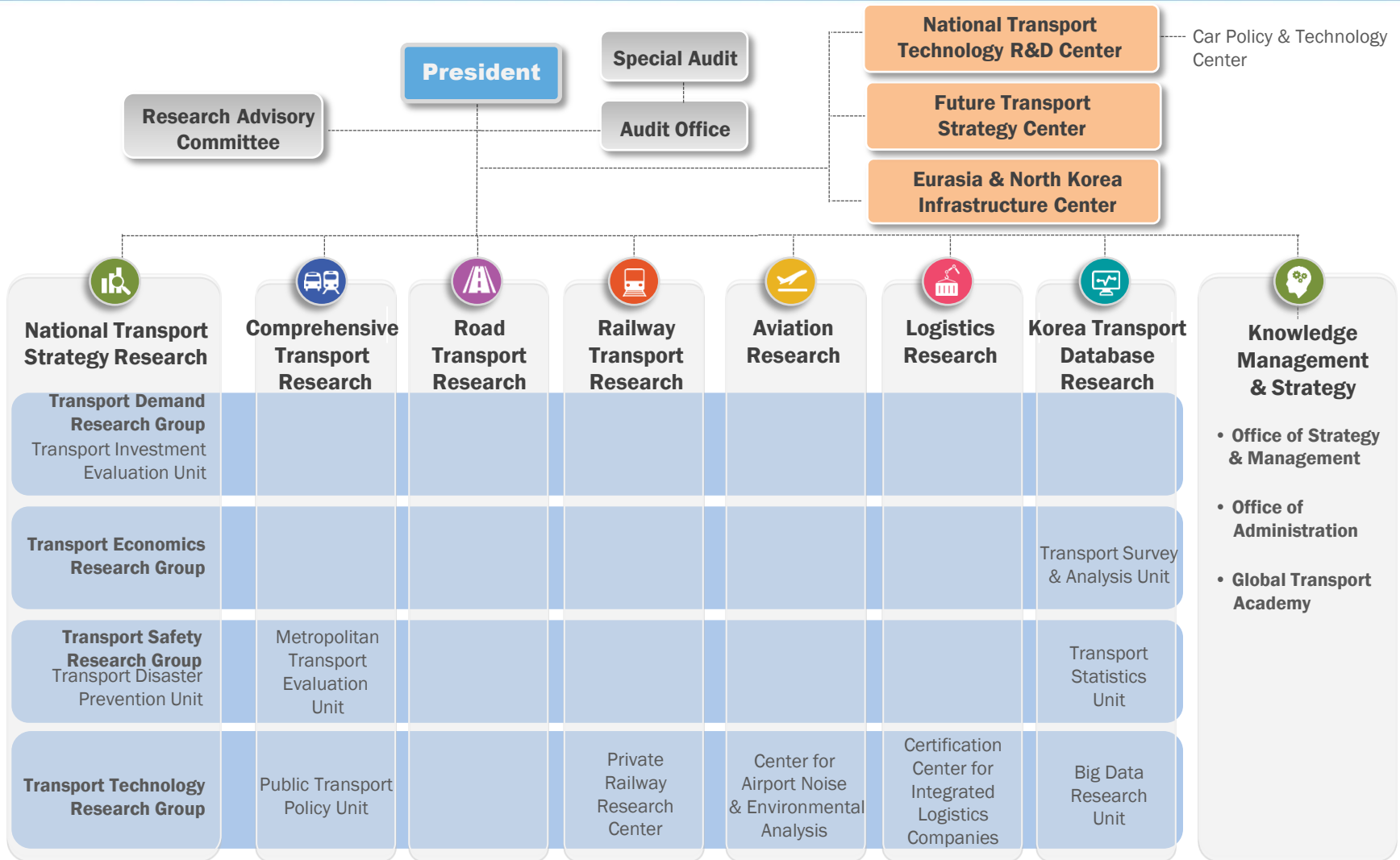
*Establishing and Implementing
Transport Business Plans Overseas*

(Philippines, Cambodia, Laos, Indonesia

Mongolia, Mozambique, Peru, Cameroon, etc.)

- Apr. 2011** Selected as the Most Outstanding Research Institute for third year in a row (by Prime Minister's office)
- Jun. 2011** 2011 KOTI World Forum
- Jan. 2012** KOTI-WPI, KOTI-World Bank Joint Seminar
- Feb. 2013** KOTI- ITF/OECD Joint Seminar
- May 2014** Selected as the Most Outstanding Research Institute (by Prime Minister's office)
- Oct. 2014** Dr. Chang Woon LEE inaugurated as 13th President of KOTI
- Dec. 2014** Relocated to the Sejong National Research Complex in Sejong City



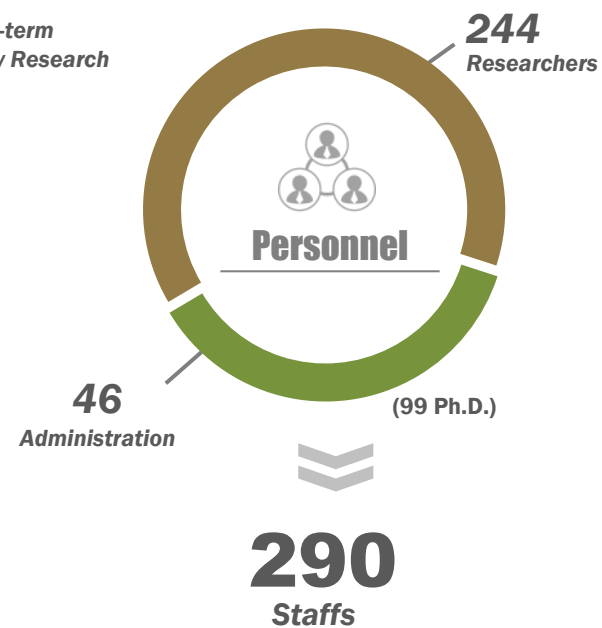
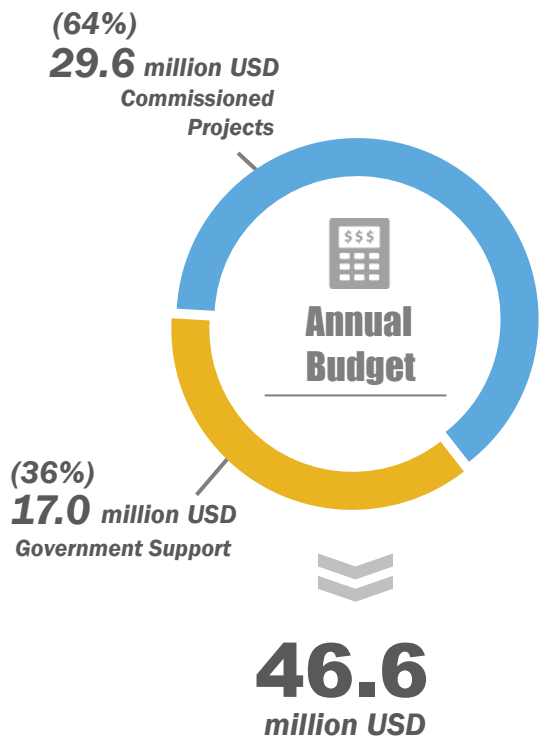


01 Research projects concentrate around each division's CRO

- CRO: Chief Research Officer
- Support for personal growth enhances professionalism
- Certification for specialized professional research

02 Division vs Group Cooperation Matrix

- Cross arrangement of manpower, cooperation research conduct
- Building a system for knowledge management and global transport knowledge sharing





NATIONAL TRANSPORT STRATEGY RESEARCH

Designing the Future of National Transportation

- • • •
Implementing transport related national agenda
- • • •
Finding and leading the national agenda
- • • •
Studies related to national traffic issues
- • • •
Issue papers to support government strategies



COMPREHENSIVE TRANSPORT RESEARCH

Building a Human-Centered Transport Environment and Transport-related Welfare System without Discrimination

- • • •
Urban and metropolitan transport
- • • •
Public transportation
- • • •
Automobile policy
- • • •
Transport welfare and transport-related administrative laws



ROAD TRANSPORT RESEARCH

Safe and Efficient Roadways Provide Communication throughout the World

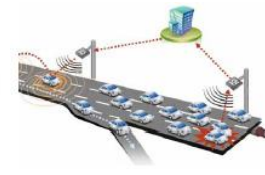
- • • •
Planning, operation and safety related to road transport
- • • •
Efficiency of road transport systems
- • • •
Devising bike transport-related plans
- • • •
Studies on pedestrian transport and building a pedestrian-friendly traffic environment in central urban areas



RAILWAY TRANSPORT RESEARCH

Creating Customized Rail Network Plans for Global Markets

- • •
Railway industry and relevant policies
- • •
Rail operating technologies
- • •
KTX economic zone study





AVIATION RESEARCH

Rising to Become a Global Aviation Power

- • • Aviation-related industrial policies
- • • Global aviation infrastructure
- • • Air and space transport technology



LOGISTICS RESEARCH

Building a Seamless and Innovative Logistics Network

- • • Logistics policy and corporate certification
- • • Logistics market research
- • • Logistics technology



KOREA TRANSPORT DATABASE RESEARCH

Using Data to Offer Directions for Future Transport

- • • Building and managing a national transport DB system
- • • National traffic surveys and demand analysis
- • • National transport DB and statistical analysis



Knowledge Management & Strategy

Enhancing Organizational Capabilities through Knowledge Sharing and Communication

- • • Gather and provide information and knowledge concerning government policy
- • • Increasing and expanding distribution of knowledge
- • • Operation of the Global Transport Academy





International Research and Seminars



▶ Joint Studies and Report Publication

- World Bank: Implementing Sustainable Transport Systems in Developing Countries
- ADB: Smart Transit Cards and Integrated Fare Collection System in South Korea
- MIT Media Lab: Cloud Transport System
- GIZ: Reviving the Soul in Seoul
- OECD/ITF: ITF's Short Cycle Project on Road Safety in Korea
- ITPS: A Comparative Study of Sustainability of Local Transport: Case Study of Korea and Japan

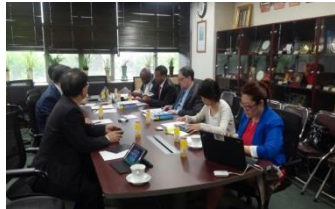
▶ International Seminars and Conferences

- KOTI - World Bank
- KOTI - UN ESCAP
- KOTI - ADB
- KOTI - OECD/ITF
- KOTI - ITPS
- KOTI - ICT
- KOTI - CITYNET
- KOTI - IDB
- KOTI - UITP

▶ Overseas Educational Training

- Educational Training for Philippines National Airport Master Plan
- Educational Training for Master Plan for Mongolia Mineral Resources Development , Construction of Infrastructure and Funding
- KOTI-World Bank Leaders in Urban Transport Planning Program (LUTP Seoul)
- Educational Training for Afghanistan Road Management and Transportation Technology, etc.

Overseas Consulting Project



► Formulation of Master Plans



- ▶ Arterial road network for Indonesia's Sumatra Island
- ▶ Arterial road network for Mozambique
- ▶ Nigeria Lagos Metropolitan Transportation
- ▶ Vietnam Hue Urban Transportation



- ▶ Russia Khabarovsk International Airport
- ▶ Philippines Cebu Mactan International Airport
- ▶ Russia Sakhalin International Airport



- ▶ National railway network in Cameroon



- ▶ Bike paths and pedestrian walkways in Abu Dhabi

► Feasibility Studies

- Railway Connection Project Involving Five ASEAN Countries
- Construction of the Baku Bay Marine Bridge (Azerbaijan)
- Clark International Airport Development Project (Philippines)
- Study on Railway Electrification Research and Design for Simatra - Tamansari Section of Mechi - Mahakli Line (Nepal)
- Feasibility Study on Asuncion Short Line Train Construction (Paraguay)

► National Transport Network Designs

- Investigation of Business Formation (Philippines)
- Challenges, Issues and Improvements in Transportation and Logistics Sector of Mongolia
- Current Transport System of Metro Manila and Future Prospects (Philippines)



Knowledge Sharing Program

▶ Transport Policy Consulting Program And Operation of a Global Transport Academy



Transport Policy Consulting Program

- Consigned projects
- Dispatching professional consulting groups
- Provision of capability enhancement programs based on infrastructure development experience



Publication of Transport Policy Leaflets

Sharing Korea's development experience with the world by publishing leaflets on Korea's exemplary transport policies (KOTI Knowledge Sharing Reports)



Joint Consulting with International Organizations

Joint development of education and consulting programs with international organizations such as World Bank, ADB and Citynet

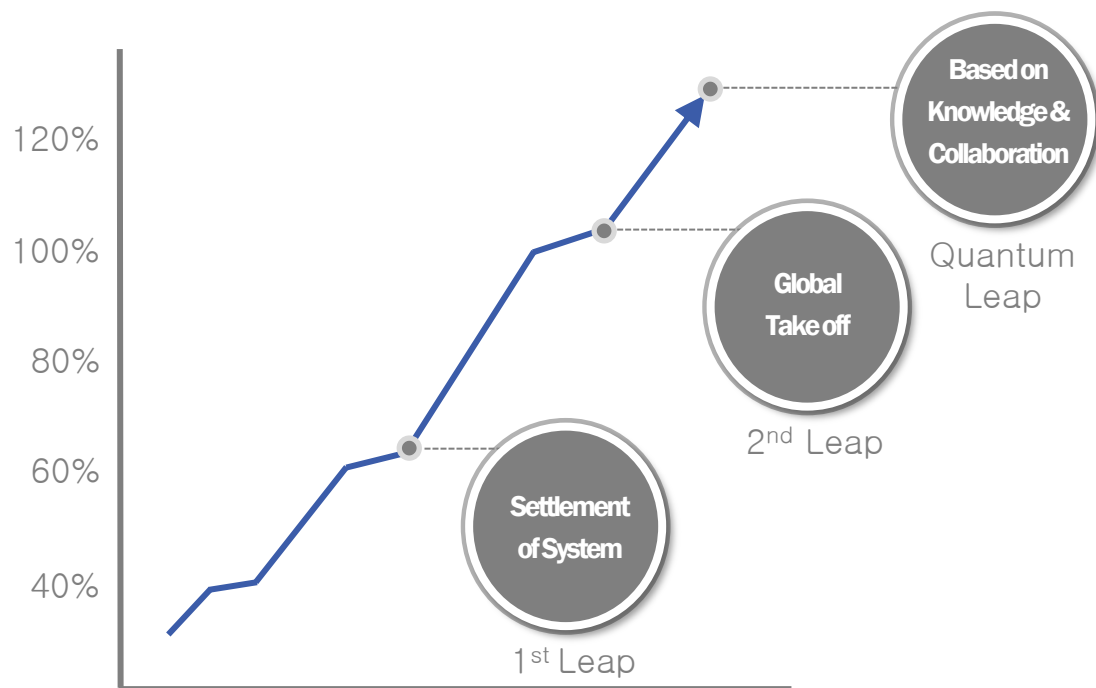


Operation of Global Transport Academy

- Using the KOTI Internet Website to provide various KSP materials
- Establishing a cyber education center for global transport cooperation



KOTI's 3 Management Value in the Sejong Era



- »
- 1 **KOTI, respected by the government**
 - 2 **KOTI, loved by the people**
 - 3 **KOTI, desire to work & research**



*KOTI enriches the future
by securing harmony among
people, the environment and transport*

KOTI
Leading the Transport People Want

Korea Transport Institute

Contact Us



Website

www.koti.re.kr



E-mail

pr@koti.re.kr



Telephone

+82-44-211-3114



Fax

+82-44-211-3222