



Joint meeting

The Korea Transport Institute and The Technology Platform for Road Transport

Ing. Petra Juránková, Ph.D.
Project Coordinator

Brno, Czech Republic | 8th December 2016

Profile | The Strong IT Group in Central Europe

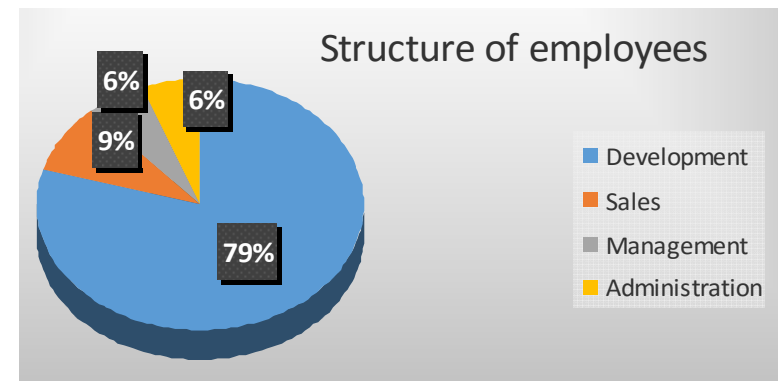
- A Czech private group of specialized software companies
- Close and effective cooperation since 1993
- The main development background is based in the Czech Republic
- Own subsidiaries in Slovakia, Poland and Hungary
- Representations in Ukraine, Belarus, Russia

oltis group

oltis polska

oltis slovakia

oltis hungaria



References

- More than 600 customers in 25 countries (incl. USA)
- Railway undertakings, operators and infrastructure managers, freight forwarders, carriers, shippers, universities, international associations and organizations etc.

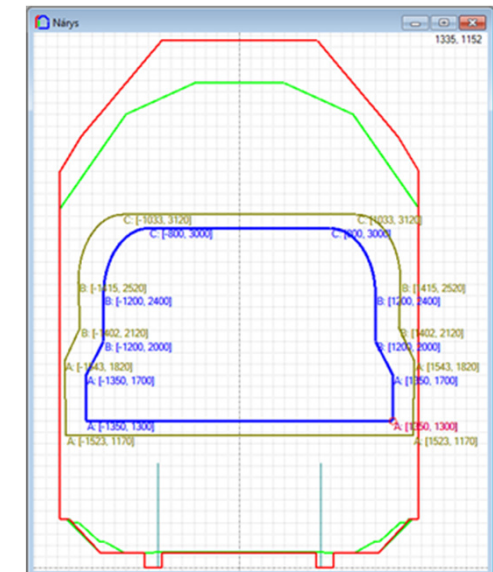
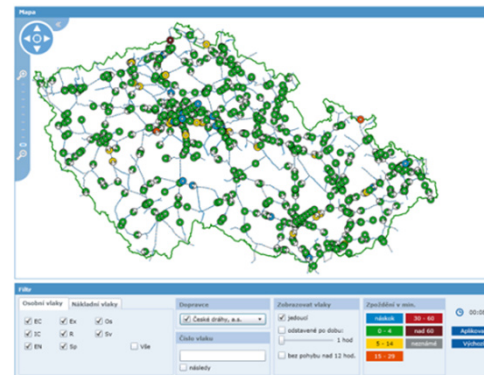
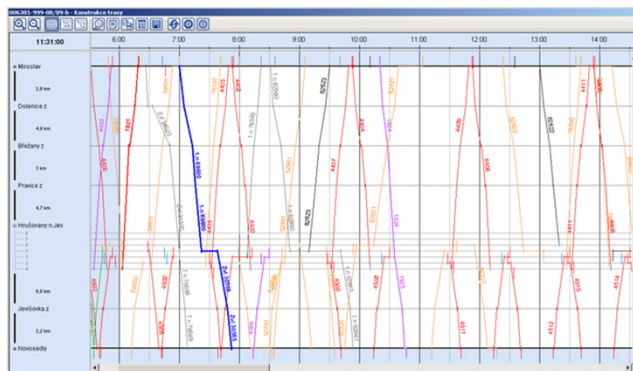


IT Systems

> for Railway Operators

Railway Infrastructure Manager

- Railway route capacity ordering and selling
- Dispatching control
- Electronic traffic documentation
- Registering and route preparation for the exceptional consignments



IT Systems

> for Railway Operators

Freight Transport

- Optimized planning of the marshalling processes
- Dispatching control
- Optimized dispatching control of the wagon circulation
- European Rail Information Centre
- System of Intelligent monitoring of rail vehicles
- Digital railway map of Europe and Asia



IT Systems > for Mobility

Passenger Transport

- Automated planning of the rolling stock and crew circulations
- Audio-visual information system
- Integrated electronic timetable
- Contactless smart card with a wide range of applications
- Sales and reservation ticketing systems

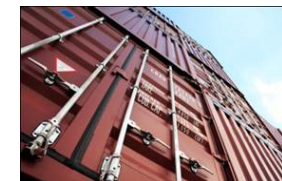


IT Systems

> for Logistics and Forwarding

Complex systems for LOGISTICS

- IT System for railway forwarders and carriers
- IT System of transport and logistics
- IT System for freight and passenger road carriers
- System for feeder service, road, air and sea transport
- Controlling and management of logistics, production or commercial warehouses
- Extensions – web portals, mobile technology, data warehousing
- Successful implementation for the national carriers



Certificates and Awards



THE BEST EUROPEAN ROUTE PLANNER
Awarded by the European Commission in 2012:
Route planner IDOS

EUREKA INNOVATION DAYS AWARD
The best EUREKA project in 2009:
Project E!3161 LOGCHAIN+ E-RAILMAP

INTERNATIONAL TRANSPORT AWARD 2013:
Achievements in Strengthening International
Relationships in the Transport Sector

THE BEST ACRI EVENT OF THE YEAR:
2013 International Rail Freight Conference
2011 International Rail Infrastructure Conference



Membership – Czech Republic



Association of the Czech Railway Industry



The Technology Platform for Road Transport



Czech Association of Forwarding and Logistics



Czech Economic Chamber



Czech Confederation of Industry



Association of Road carriers



Czech Logistics Association



Global Standard for identification, automatic data gathering and communication



Reliant Expert Club



Association of Transport, Forwarding and Service Companies



Association for Transport Telematics



Czech ICT Alliance

Membership – Europe



DTLF

Digital Transport & Logistics Forum
– European Commission's Advisory Board



UNIFE

Association of the European Rail Industry (Brussels)



OSJD

Organization for Cooperation of Railways (Warsaw)



CCTT

The International Association Coordinating Council on Transsiberian Transportation (Moscow)



UITP

International Association of Public Transport (Brussels)



RFE

Rail Forum Europe (Brussels)



IBS

Community of European Railway Forwarders (Berlin)



Polska Izba

Polish Chamber of Railway Devices and Services Producers

Research & Innovation Projects

Project E! 3161 E_RAILMAP

- Electronic Railway Map of Europe (2004–2007)
- AWARDED AS THE BEST EUREKA PROJECT IN 2009

Project E! 4062 LOGCHAIN+ ERWIN

- European RailWay Infrastructure Network (2008–2011)

Project E! 4509 EIMIS

- European Inter-Modal Information System (2010–2012)

Project E! 5025 LOGCHAIN+ LOGI-GATE

- RFID reader gate for railway rolling stock, road vehicles and storage mechanisms (2010–2012)

Project E! 6725 REAL-BRIDGE DBS

- Railway Euro-Asian Land Bridge Data Base System (Information Support of CIM/SMGS Transports) (2012–2015)

Project E! 6726 LOADFIX

- Development of the Software Web Application for Loading and Fixing Goods in Railway Freight Wagons (2013–2016)



D-RAIL (FP7 4th CALL)

- Project focused on prevention of derailment in rail freight operation (2011–2014)



MERLIN (FP7 5th CALL)

- Project focused on energy efficiency with the aim of 10% energy reduction (2012–2015)



CAPACITY4RAIL (FP7 6th CALL)

- Project focused on development new railway technology for increasing capacity till 2050 (2013–2016)



IT2RAIL (HORIZON 2020 1st CALL)

- Information Technology for Shift2Rail (2015–2018)



Shift2Rail Open Calls 2016

oltis group

GOF4R Governance of the Interoperability
Framework for Rail and Intermodal Mobility (2016 – 2018)



ST4RT Semantic Transformations for Rail
Transportation (2016 – 2018)



VITE Virtualisation of Testing Environment (2016 – 2018)



Prague 2017

International
Rail Forum &
Conference

Invitation to Prague in 2017

Conference Profile

Invitation to the International Rail Conference



Organized by OLTIS Group

Place Czech Republic

Clarion Congress Hotel Prague

Term 21–24 March 2017

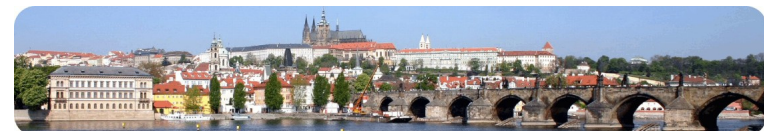
Simultaneous translation English, Russian, Czech

Conference website www.irfc.eu

Call for Papers www.irfc.eu/en/speakers/

Exhibition

Sponsorship



Conference Profile

oltis group

Patronage



- Topics
- 1 COMPETITIVENESS and SUSTAINABILITY
 - 2 DIGITALISATION in Railway Transport
 - 3 INTEROPERABILITY – TAF/TAP TSI Implementation
 - 4 INNOVATION – European Rail Research and Development
 - 5 INTEGRATION – Focus on Central and Eastern Europe

Conference Profile

SPEAKERS IN 2017



- Maros Sefcovic, Vice-President, European Commission
- Violeta Bulc, European Commissioner for Transport, European Commission *(to be confirmed)*
- Dan Tok, Minister of Transport, Czech Republic
- Martina Werner, European Parliament
- Josef Doppelbauer, Executive Director, ERA
- Jean-Pierre Loubinoux, Director General, UIC
- Philippe Citroën, Director General, UNIFE
- Libor Lochman, Executive Director, CER
- Carlo Borghini, Executive Director, Shift2Rail JU





Thank you for attention