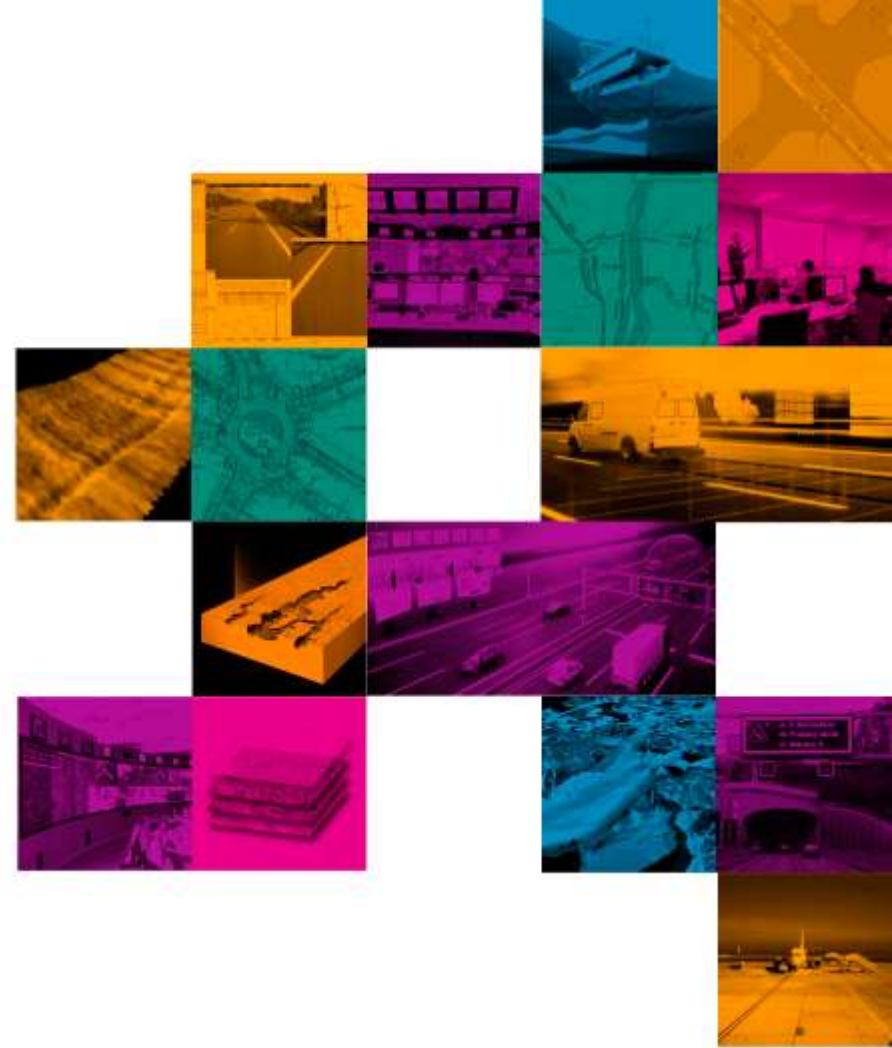




VARIS BRNO a.s. YOUR WAY TO SMART SOLUTIONS





Innovation in transportation, asset management and GIS

20 years on the market - leading supplier of bespoke solutions in:


- Asset management and maintenance on roads and waterways.
- Intelligent systems for traffic supervision and control.
- Application implementations of graphical information systems.




- We use most up-to-date technologies.
- We build open solutions.
- We realize projects of science and research.



- VINCI Energies works to help public authorities and business clients roll out, equip, operate and optimize their energy, transport and communication infrastructure, industrial facilities and buildings
- Decentralized organization - shared values
- Operating in 51 countries worldwide, 1,600 business units intervene in infrastructure, industry, service sector and information and communications technology (ICT).
- The strength derived from being part of the VINCI group - a world player in the construction and concession sectors.


€10,180m
Revenue


€597m
EBITDA


€568m
Operating profit from ordinary activities


€373m
Net profit attributable
to equity holders of the parent


65,342
employees



SOLUTION FOR CLEVER MANAGEMENT OF ROADS

Our advantages:

- The latest technology and methods
- Use of expert modules for pavement management system
- SW support of entire life-cycle of maintenance and management
- Cloud solution



We have two decades of experience, we are the supplier for R&M Directorate CR, regions and communities.

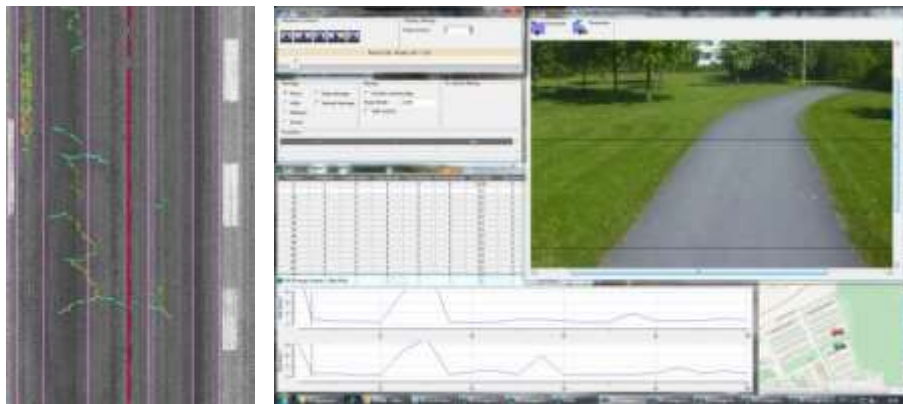




SOLUTION FOR CLEVER MANAGEMENT OF ROADS

CleveRA Car:

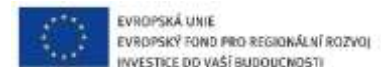
- Most up-to-date technologies
- High precision in compact solution
- High speed data collection
- Simultaneous collection of diverse data-sets
- Quick data processing



CleveRA system and CleveRA Car vehicle - result of three year long VARS Innovation Centre project.



This project was co-financed by the Operational Programme for "Enterprise and Innovations for Competitiveness".

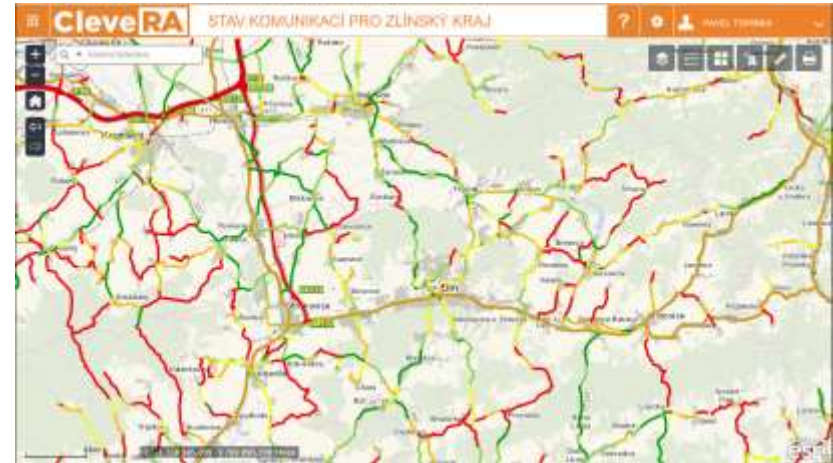




SOLUTION FOR CLEVER MANAGEMENT OF ROADS

We process collected data for Pavement Management Systems usage:

- Evaluate the state of a road in compliance with required standards.
- Repeated measuring of variable parameters to predict the future state of a road network.
- Identify and evaluate road defects.



- Design maintenance and repair plans in the worldwide professional dTIMS SW
- Road digital inventory for asset management.
- Measured and evaluated data as well as manager reports are published using CleveRa web modules.



TRAFFIC INFORMATION AND CONTROL CENTRES

Complex solution for surveillance, traffic control and traffic information dissemination.

Innovations:

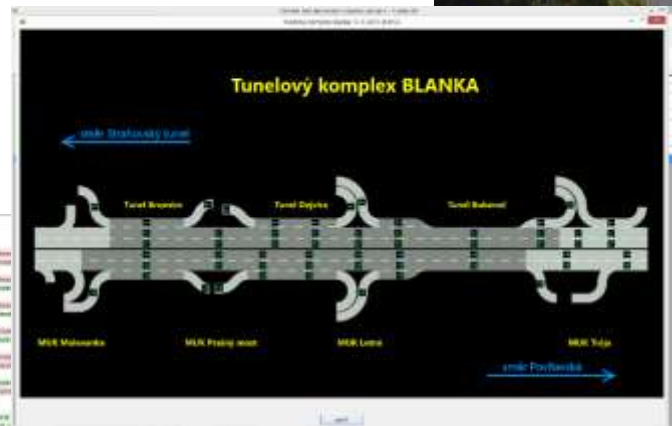
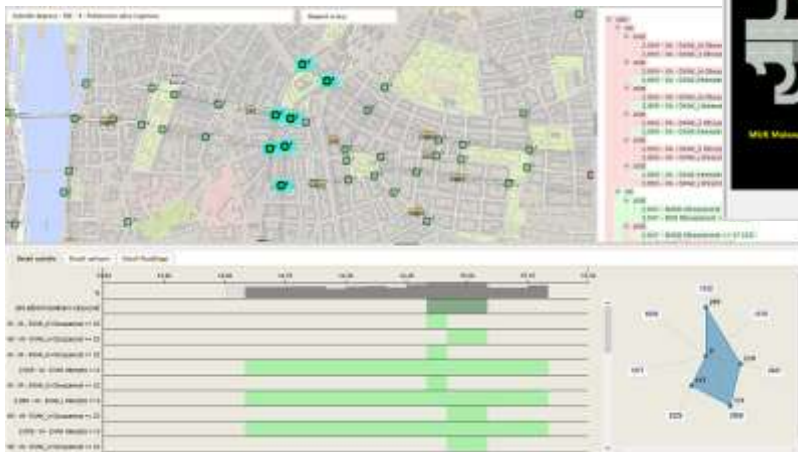
- Solution based on traffic models
- Use of traffic predictions
- Open platform – replaces earlier proprietary systems



System is widely proven in operation:

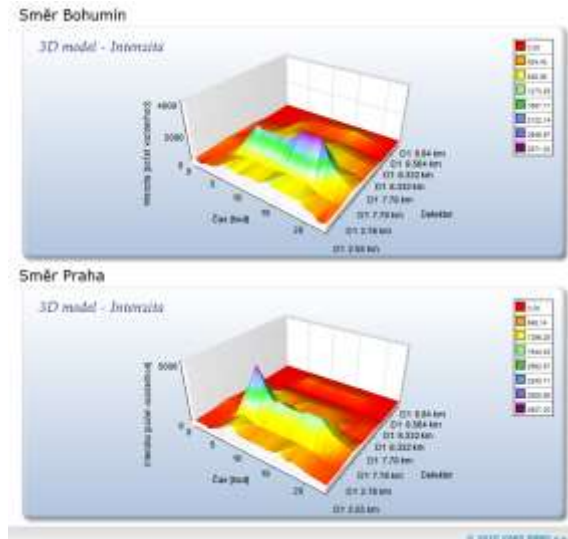
- National Traffic Information Center CR since 2005.
- Main Traffic Control Center of city of Prague since 2007.

- We include data from all sources
- We create the image of the traffic situation
- Using the scenarios we generate traffic measures



- We control the technical stage of traffic equipment
- We deliver turnkey traffic control centers

We create tools for traffic engineers



We provide traffic information to registered customers and the public via:

- web services
- RDS-TMC
- web applications
- mobile applications

Complex solution for supervision of mobility in the cities

We provide clearly the online status of the

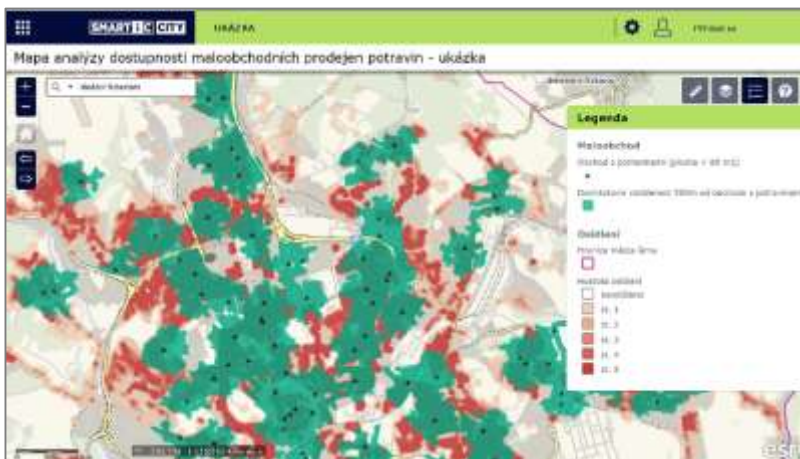
- Traffic in the city
- Parking
- Public transport
- Car sharing and bike sharing
- Charging stations...



- Medium-and long-term statistics and evaluation of efficiency of individual aspects of mobility
- Mobile applications to facilitate the movement of people in the city

Solutions for efficient use of information from the all resources of the city and external providers

- Better information for asset management of city
- Better information for management decision making
- Better communication with city residents



- Understandable interactive mapping applications
- Geographic and geo-statistical analysis
- Reports and dashboards

- Cross views at the data kept in a separate agendas - transport, economy, environment, health, safety and culture - brings new information
- Tracking changes in data over time reveals trends



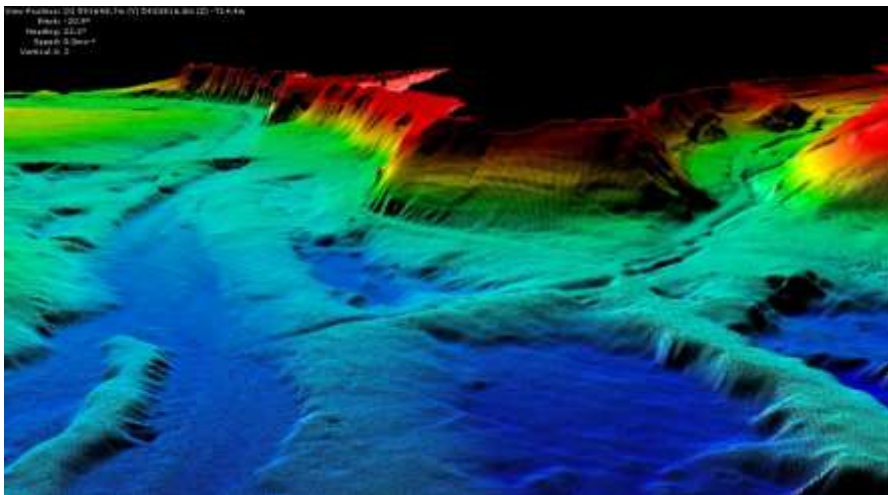
- Applications that allow residents to participate in the care of their city
- Well-timed distribution of information on the planned traffic restrictions, cultural and sporting events around the residence

CAPEREA

BATHYMETRY AND SEDIMENT MEASURING SYSTEM FOR WATERCOURSES AND RESERVOIRS

Our advantages:

- Most up-to-date technologies for watercourses and reservoirs.
- High precision measurement.
- Operating flexibility.
- Quick data processing.



Long-term experience:

- System for creation of digital river navigation maps since 2003.
- Implementation and equipment of measuring ship for Elbe River Authority since 2009.



Our way

- We want to further develop our solutions to better support business activities and processes of our customers.
- We do not limit ourselves on the IT aspects, we want to change and improve the processes as such.
- We are focused on international cooperation, we are a part of VINCI Energies group.
- We welcome new partnerships with companies of similar attitudes.

